

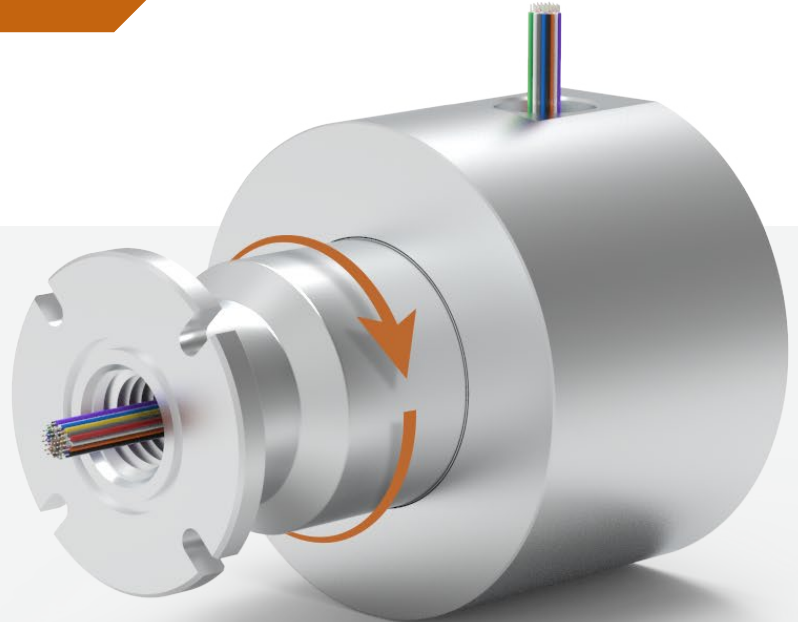
DESIGN FEATURES & SPECIFICATIONS

# Slip Ring Protective Enclosure (SRPE)

Enhance protection with a waterproof and dustproof sealed slip ring enclosure.

DSTI offers a wide range of slip rings for transferring electrical signals, power or data from a fixed structure to a rotating piece of equipment.

To mitigate slip ring damage when used in harsh environments, DSTI offers an all-aluminum enclosure for enhanced protection against water and dust ingress. The SRPE features a low-torque design, a flange located on the shaft for improved mounting capabilities and NPT connections for installing electrical conduit.



**SPRAY & SPLASH PROTECTION**



**DUST & DIRT PROTECTION**



**CONTINUOUS ROTATION UP TO 250 RPM**

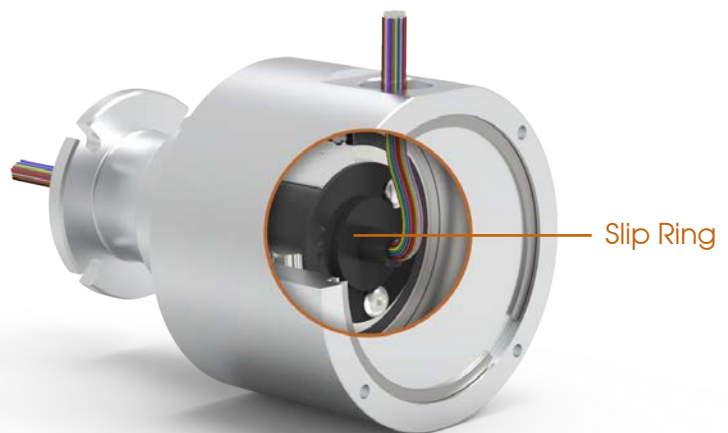


**IN-STOCK & READY TO SHIP**

**SPECIFICATIONS**

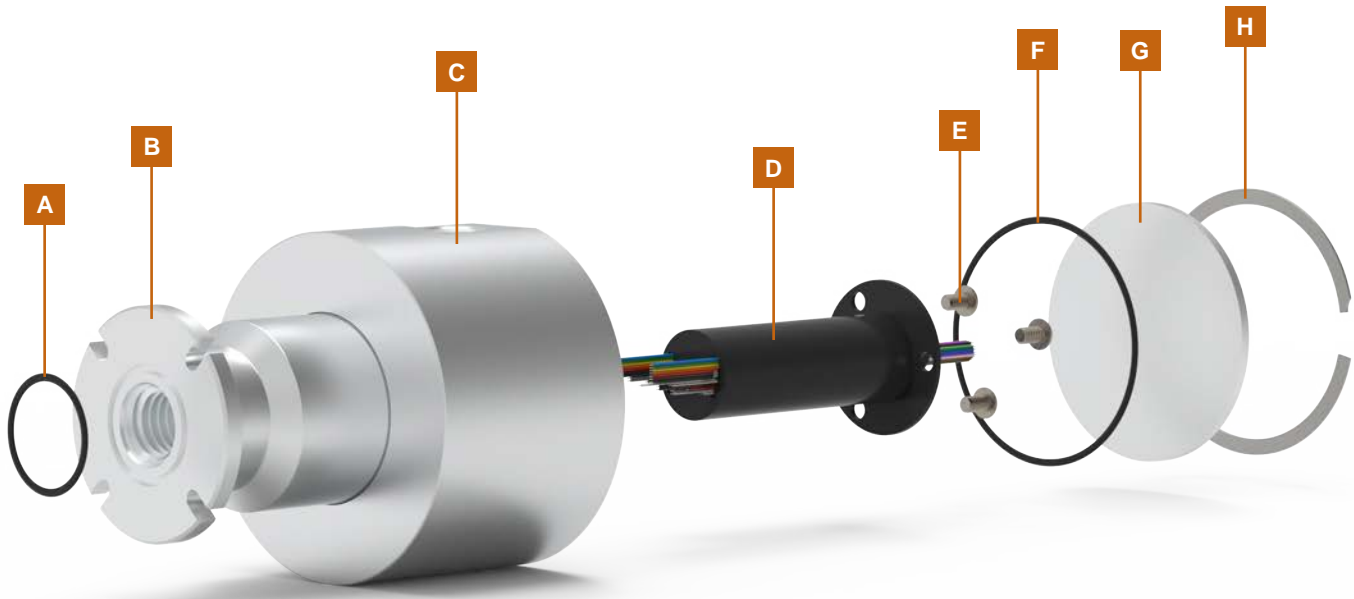
SLIP RING COMPATIBILITY*	ES, ESM, ESE
CONNECTION OPTIONS	NPT / Shaft Flange
CONNECTION SIZE	.50" / 1.250" O-Ring
DIAMETER	3.69"
LENGTH	4.99"
MINIMUM TORQUE	8 in-lbs.
MAXIMUM ROTATION	250 RPM
MATERIAL	Aluminum

\*Not compatible with ES6A or ES12A slip rings. Slip rings are sold separately.



DESIGN FEATURES & SPECIFICATIONS

# Slip Ring Protective Enclosure (SRPE)



## INSTALLATION INSTRUCTIONS

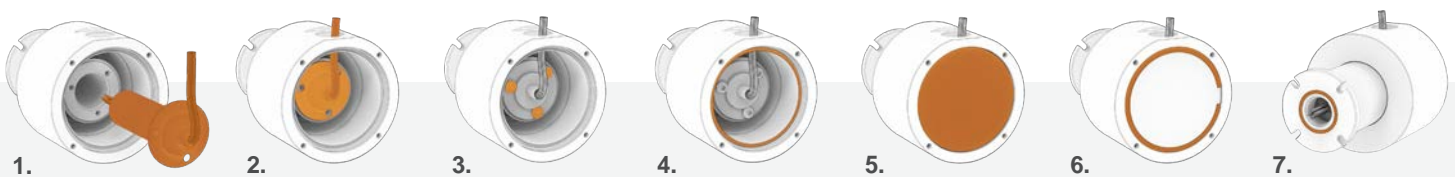
1. Carefully unpackage the slip ring (D) and check for any shipping damage.
2. Install the slip ring into the bore of the shaft by carefully pulling the wire leads from the capsule side of the slip ring through the shaft (B). The opposite wire leads can be pulled through the 1/2" NPT passage on the housing (C).
3. Align the slip ring with the holes on the shaft and tighten the three #10 fasteners (E). *Do not over-tighten the fasteners.*
4. Install the large o-ring (F) into the clean and dry seal gland on the open end of the housing. The seal can be gently stretched by hand to help keep it in the gland.
5. Install the cap (G) into the housing directly on top of the o-ring.
6. Press down on cap to compress o-ring and install retaining ring (H) into ring groove.
7. If using the flange mount, install the small o-ring (A) in the gland on the flange side of the shaft.

## HARDWARE

A	O-ring for Flush Mounting to Shaft
B	Shaft
C	Housing
D	Slip Ring (ES*, ESM, ESE) Sold Separately
E	Fasteners
F	Environmental O-ring Seal
G	Cap
H	Retaining Ring

\*Not compatible with ES6A or ES12A slip rings.

See page 3 for options on mounting/integrating the SRPE-100 into your equipment.



DESIGN FEATURES & SPECIFICATIONS

# Slip Ring Protective Enclosure (SRPE)

## INSTALLATION INSTRUCTIONS (CONTINUED)

### 1/2" NPT Connections

The protective enclosure includes threaded connections on both ends for installing electrical conduit as added protection against dust and water.

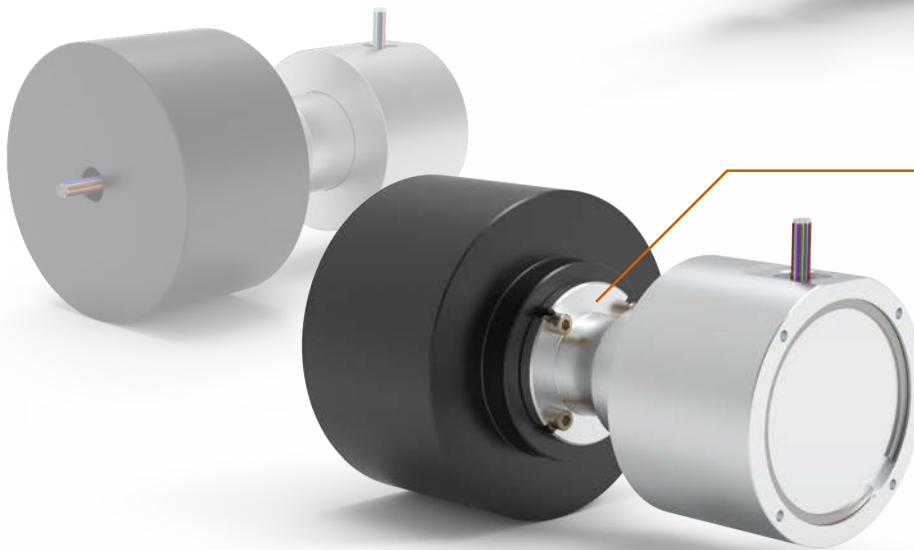
*Conduit fittings not included*



### Shaft Mounting Flange

The shaft on the protective enclosure includes four slotted holes for quick and easy mounting. An o-ring face seal is included for additional protection against dust and water.

*Mounting fasteners not included*



### Anti-Rotation Device

The protective enclosure includes four, #10-24 threaded holes for mounting an anti-rotation device. This allows the shaft to rotate with the equipment while keeping the housing stationary.

*Anti-rotate device not included*



DESIGN FEATURES & SPECIFICATIONS

# Slip Ring Protective Enclosure (SRPE)

